

Roof Coverage Rates

Fact Sheet



Recommended Coverage Guideline for Nutech Roof Primers/Sealers and Top Coat Systems

The recommended coverage is 160 square feet roof area per Gallon per coat. Three coats are normally required comprising, one coat of primer/sealer and two coats of top coat.

The following table is recommended for the following products; Asbestos Primer, Master Sealer, NuPrime, SupaPrime, GP Primer, Elastomeric 3000 Membrane, Metal Primer, TileFlex 2000® and NXT Cool Zone®.

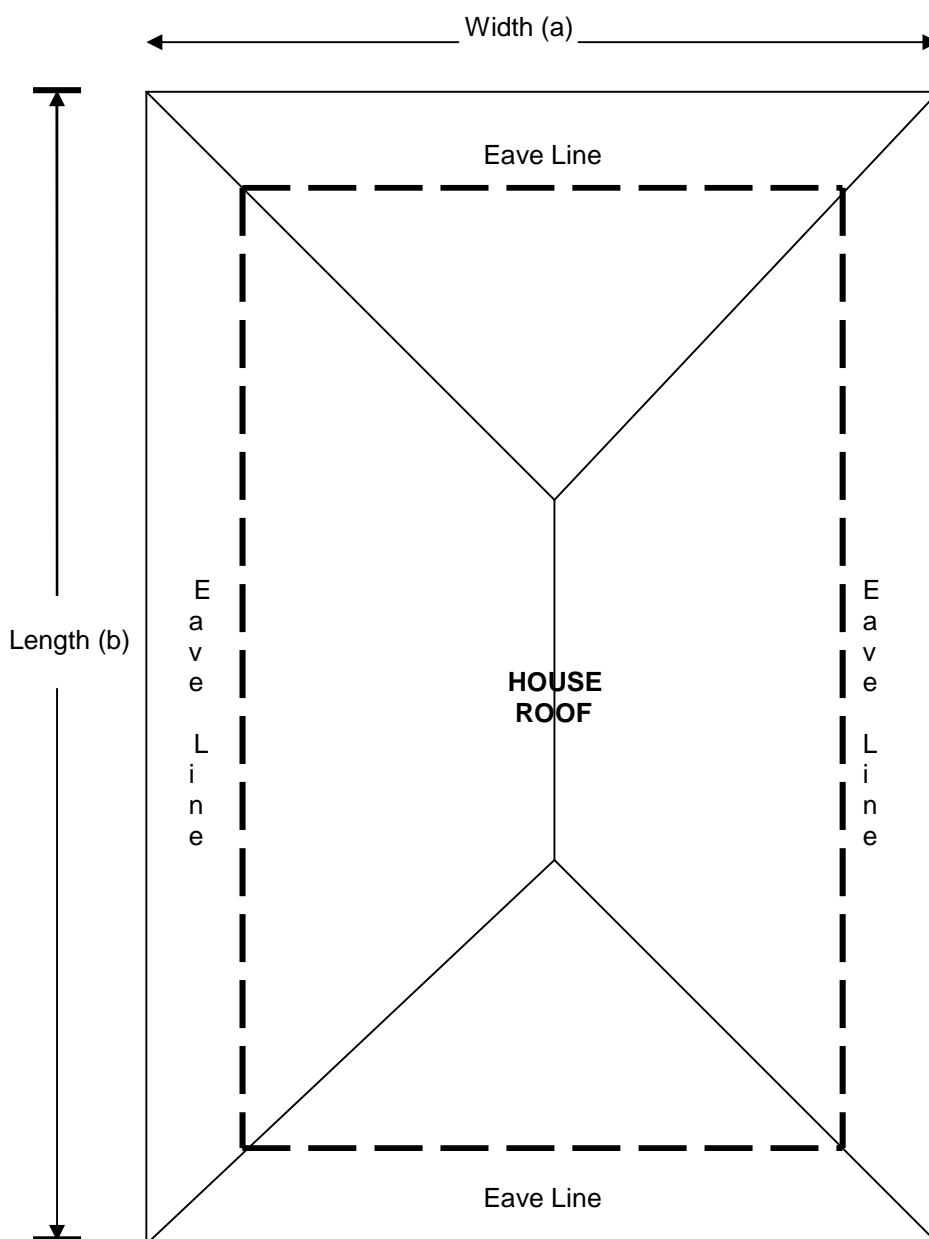
House Squares	Roof Square Feet	Gallons Required Per Coat	Number of 20 LT Drums Required Per Coat
8	1041	6.4	1 ½ drums
9	1171	7.2	1 ½ drums
10	1301	8.0	1 ½ drums
11	1431	8.8	2 drums
12	1562	9.6	2 drums
13	1692	10.4	2 drums
14	1822	11.2	2 ¼ drums
15	1952	12.0	2 ½ drums
16	2082	12.8	2 ½ drums
17	2212	13.6	3 drums
18	2342	14.4	3 drums
19	2473	15.2	3 drums
20	2603	16.0	3 drums
21	2733	16.8	3 ½ drums
22	2863	17.6	3 ½ drums
23	2993	18.4	4 drums
24	3123	19.2	4 drums
25	3253	20.0	4 drums
26	3384	20.8	4 drums
27	3514	21.6	4 ½ drums
28	3644	22.4	4 ½ drums
29	3774	23.2	4 ½ drums
30	3904	24.0	5 drums
31	4034	24.8	5 drums
32	4164	25.6	5 drums
33	4294	26.4	5 ½ drums
34	4425	27.2	5 ½ drums
35	4555	28.0	5 ½ drums



Roof Coverage Rates Fact Sheet



Roof Plan - Roof Area = Width in feet (a) x Length in feet (b)



Note: This allows for a standard 21 degree roof pitch and 3 foot wide eave.

Important Note

The information given on this data sheet is based on many years experience and is correct to the best of our knowledge. However since the use of our product, surface conditions, weather and a number of other factors are completely beyond our control, we can only be responsible for the quality of our product at the time of dispatch. For more information please contact our Company. As this information is of a general nature, we cannot assume any responsibility in individual cases.



NUTECH PAINT PTY LTD

Page 2 of 2

4 Keppler Circuit Seaford Victoria Australia 3198
Tel: +61 3 9770 3000 Fax: +61 3 9775 1680
Website: www.nutech.com.au Email: sales@nutech.com.au

USA Roof Coverage Rates NTFS039-V1-1209.doc

USA NUTECH USA LLC 1888-760-8991 Los Angeles info@nutechpaints.com

NUTECH PAINT THOMASTOWN 216 Settlement Road Thomastown Victoria Australia 3074 Tel: +61 3 9465 5111 Fax: +61 3 9465 5222
NUTECH PAINT SYDNEY 18 South Street Rydalmere NSW Australia 2116 Tel: +61 2 9638 7089 Fax: +61 2 9638 7911
NUTECH PAINT BRISBANE Unit 2 14-16 Loganlea Road Waterford QLD Australia 4133 Tel: +61 7 3805 7455 Fax: +61 7 3805 2677
NUTECH PAINT WESTERN AUSTRALIA 1/43 Felspar Street Welshpool WA Australia 6106 Tel: +61 8 9458 2111 Fax: +61 8 9451 6004
NUTECH PAINT UK Tel: +44 (0)141 945 2005